

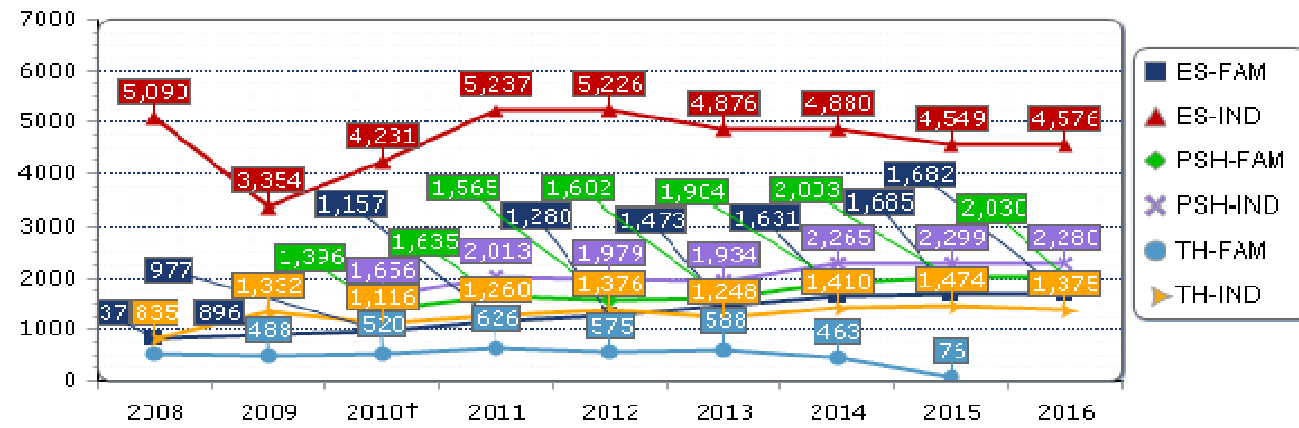
Annual Homeless Assessment Report Counts  
 CoC: OH-502 Cleveland/Cuyahoga County CoC  
 AHAR Counts of People Served by Reporting Category

Reporting Category	2008	2009	2010†	2011	2012	2013	2014	2015	2016
Individuals in Emergency Shelter	5,090	3,354	4,231	5,237	5,226	4,876	4,880	4,549	4,576
Individuals in Transitional Housing	835	1,332	1,116	1,260	1,376	1,248	1,410	1,474	1,375
Individuals in Permanent Supportive Housing	*	*	1,656	2,013	1,979	1,934	2,265	2,299	2,280
Families in Emergency Shelter	837	896	977	1,157	1,280	1,473	1,631	1,685	1,682
Families in Transitional Housing	512	488	520	626	575	588	463	76	*
Families in Permanent Supportive Housing	*	*	1,396	1,635	1,565	1,602	1,904	2,003	2,030

† First year PSH data included in AHAR.

\*No data entered for this year or status is not Confirmed and Usable.

AHAR Counts of People Served by Reporting Category



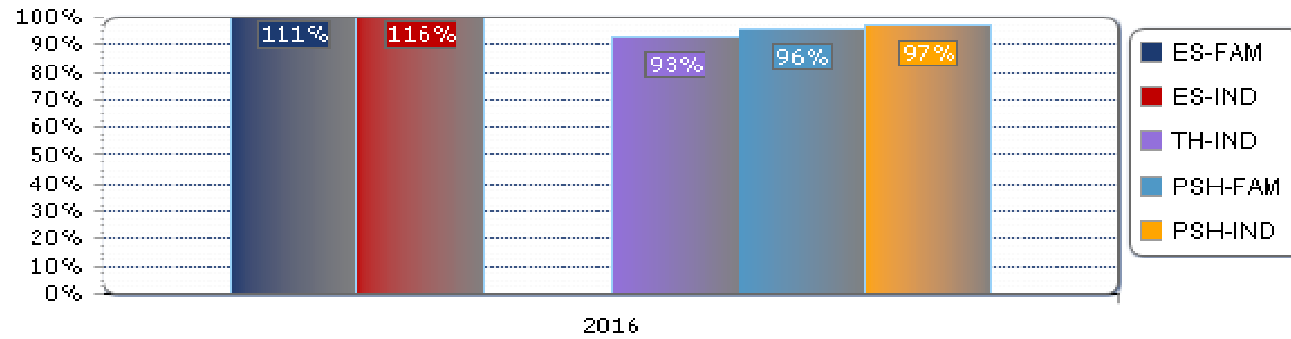
## Average Bed Utilization by AHAR Reporting Category

Reporting Category	2008	2009	2010†	2011	2012	2013	2014	2015	2016
Individuals in Emergency Shelter	139%	111%	123%	98%	132%	126%	134%	109%	116%
Individuals in Transitional Housing	86%	92%	85%	90%	88%	88%	94%	93%	93%
Individuals in Permanent Supportive Housing	*	*	95%	107%	102%	102%	105%	97%	97%
Families in Emergency Shelter	84%	80%	73%	95%	92%	115%	113%	102%	111%
Families in Transitional Housing	84%	88%	91%	107%	78%	97%	106%	117%	*
Families in Permanent Supportive Housing	*	*	90%	103%	104%	103%	101%	102%	96%

† First year PSH data included in AHAR.

\*No data entered for this year or status is not Confirmed and Usable.

### 2016 Average Bed Utilization by AHAR Reporting Category



## AHAR Counts of People Served on an Average Night

Reporting Category	2008	2009	2010†	2011	2012	2013	2014	2015	2016
Individuals in Emergency Shelter	982	668	720	704	718	674	702	649	670
Individuals in Transitional Housing	320	528	487	495	529	445	504	503	446
Individuals in Permanent Supportive Housing	*	*	1,476	1,707	1,753	1,724	2,014	2,098	2,101
Families in Emergency Shelter	129	138	121	169	142	186	171	187	208
Families in Transitional Housing	219	248	252	289	265	309	182	27	*
Families in Permanent Supportive Housing	*	*	965	1,470	1,427	1,467	1,698	1,854	1,943
<b>Total</b>	<b>1,650</b>	<b>1,582</b>	<b>4,021</b>	<b>4,834</b>	<b>4,834</b>	<b>4,805</b>	<b>5,271</b>	<b>5,318</b>	<b>5,368</b>

† First year PSH data included in AHAR.

\*No data entered for this year or status is not Confirmed and Usable.

